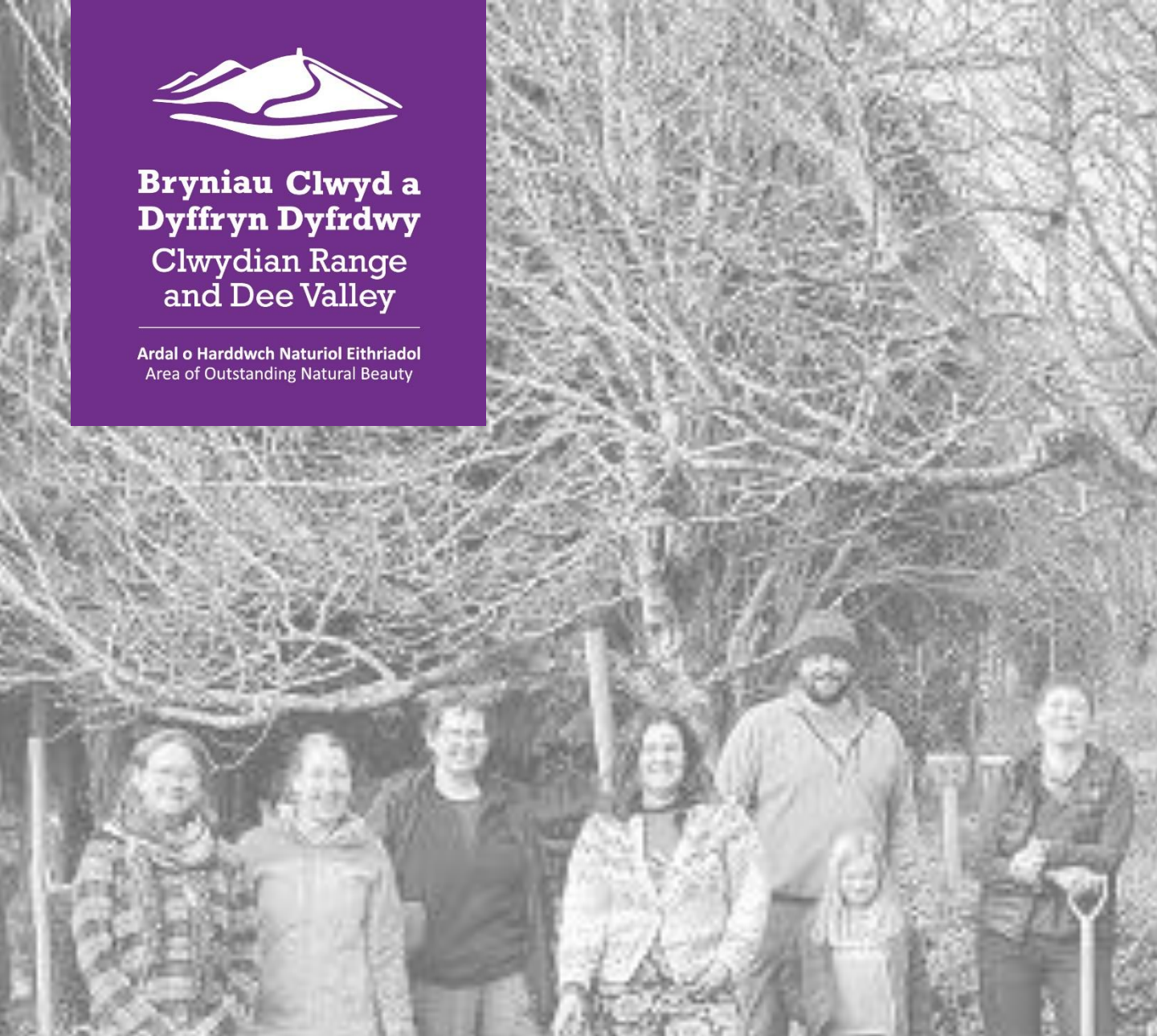




**Bryniau Clwyd a
Dyffryn Dyfrdwy**
Clwydian Range
and Dee Valley

Ardal o Harddwch Naturiol Eithriadol
Area of Outstanding Natural Beauty



Sustainable Development Fund Annual Report 2022/2023

Clwydian Range and Dee Valley
Area of Outstanding Natural Beauty



1. Introduction

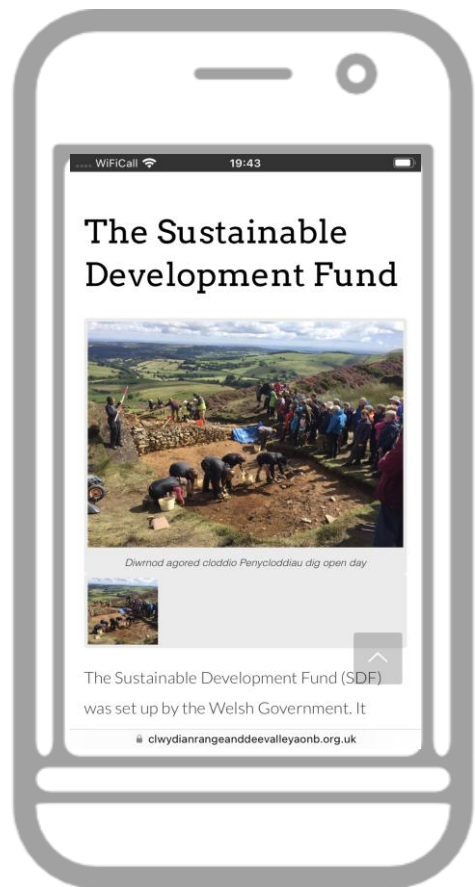
Welcome to the Clwydian Range and Dee Valley AONB's Sustainable Development Fund Annual Report for 2022. This report covers the financial period of April 2022 to March 2023. During the years the Sustainable Development Fund (SDF) supported 19 projects, 7 Countryside Grant Schemes and 9 Community Transport Schemes.

SDF contributed a total of £95,000.00 in project grants from an overall budget of £100,000 (The £5,000 represents the 5% administration fee retained by the AONB). The total value of the SDF programme including cash match funding, volunteer time and in-kind contributions amounted to £541,076.49

The 2022 CRDV SDF Programme was co-ordinated by the Sustainable Development Officer Ceri Lloyd, Ros Stockdale who managed the programme whilst Ceri was on maternity leave and other assistance was sought from the wider AONB team.

2. Publicity

The CRDV AONB are fortunate to not need to heavily publicise the SDF as demand/need is always much greater than availability and the AONB do not want to disappoint prospective applicants. The fund is publicised on the AONB's website and that of Denbighshire County Council. Information is shared with local voluntary councils. The AONB publish information on their social media platforms including Facebook, Twitter and Instagram. Information is also made available to the AONB's Community Champions (representatives from each Town and Community Council in the AONB).



3. Assessment Panel

The panel were pleased to be able to meet and consider projects in person following the pandemic. Panel meetings were held as follows;

- 27th April 2022 at Loggerheads Country Park
- 26th September 2022 at Gwaenysgor Village Hall

One e-mail round was also considered in January 2023.

At the September panel we took the opportunity to look at some previously supported projects in the village of Gwaenysgor and surrounding areas.

Panel members represented the CRDV AONB Joint Committee, the AONB Partnership, the AONB Management Service, and Natural Resources Wales. Members were:



4. Application Process

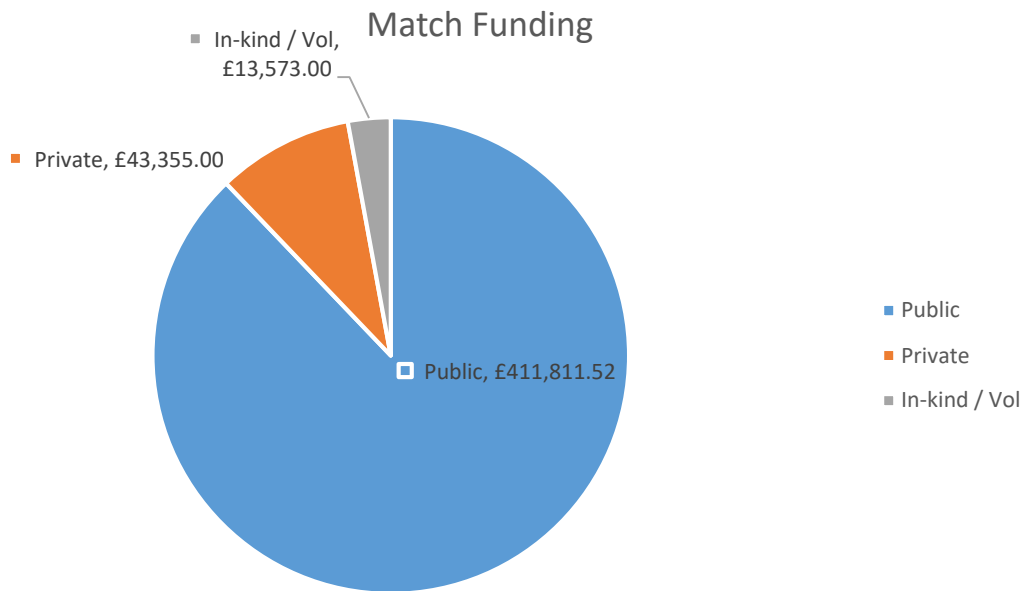
Applications for consideration were sent to panel members approximately two weeks ahead of the decision making date. The AONB Team provide a summary of each project application with an outline scoring linked to the Core and Other criteria set out by the Welsh Government in the SDF Guidance. The scoring is a guide only.

No contentious applications were presented to the panel.

One approved project titled “Colomendy Viability Study” did not go ahead. The aim of the project was to enable the bringing together of partners, including the AONB and local authorities, Liverpool Council and tenants of the estate, Kingswood, and commissioning of options appraisals to identify the future of Colomendy at the heart of, and dedicated to, the care of, access to, and appreciation of, the AONB. The project was unable to get all partners on board therefore the funding was reallocated.

5. Financial Summary

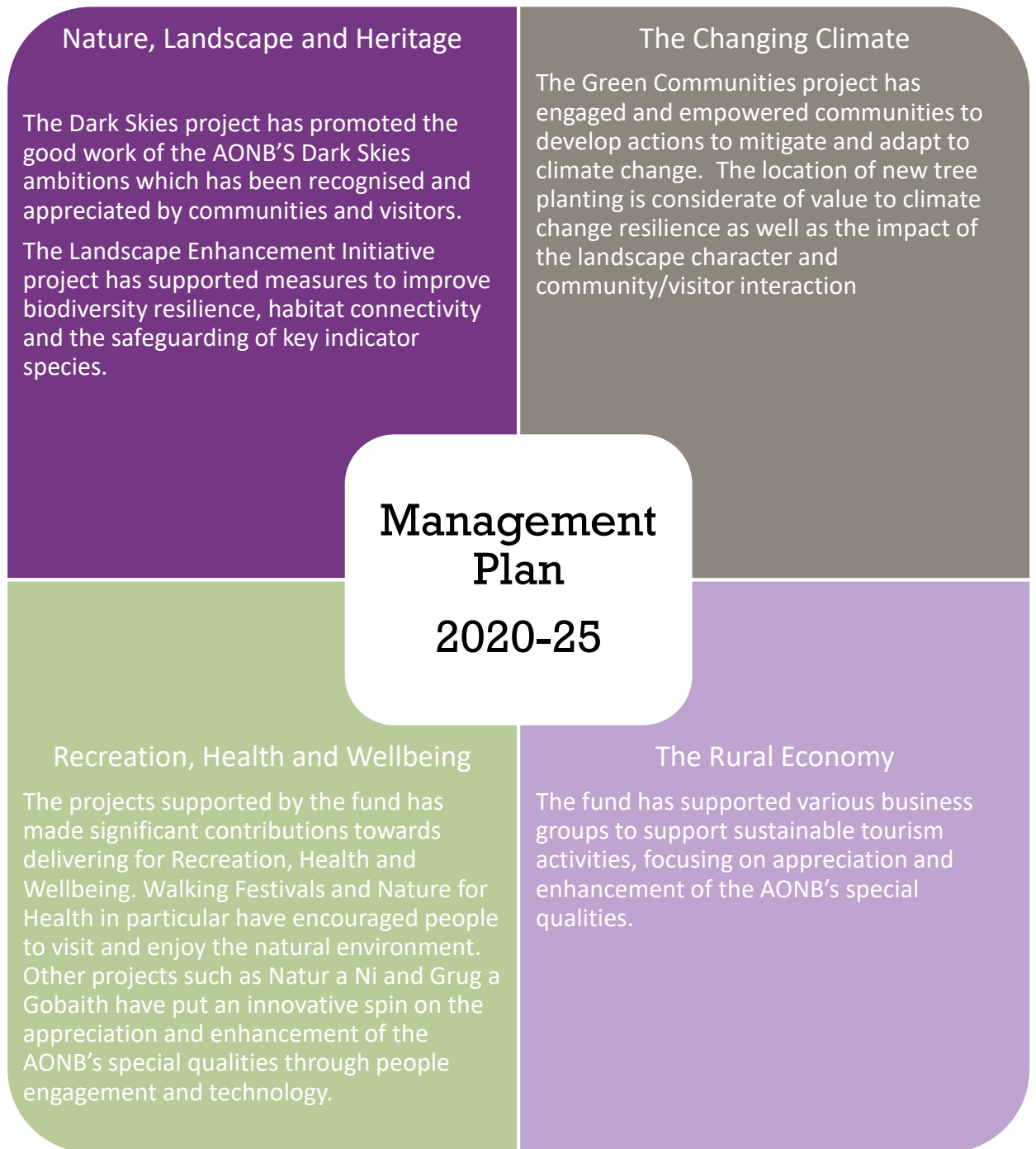
- The total SDF grant from Welsh Government was £100, 000
- The total amount levered in as match funding was £468,739.52
- Cash levered in from the public sector was £411,811.52
- Cash levered in from the private sector was £43,355
- Levered in voluntary/contributions in-kind were worth £13,573
- Administration costs of 5% were claimed totalling £5,000



**There were two projects with copious match funding supported by SDF in 2022. Project reference CRDV07 and CRDV11 each attracted over £150,000 public cash match funding individually which has significantly impacted the perceived value of match funding.

6. Management Plan

How is the Sustainable Development Fund delivering for the AONB's Management Plan 2020-2025?



7. Summary of outputs



4014 Volunteer Hours recorded



1260 People engaged

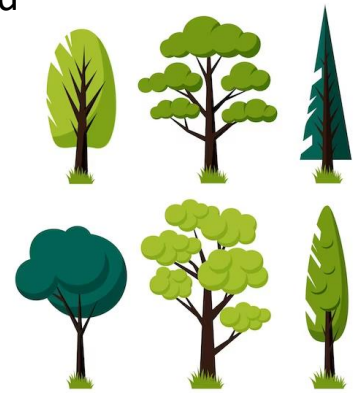


44 Local contractors / suppliers engaged



7 Habitats improved

465 Trees planted



28 Marketing and Promotional activities



197 Public events

REFERENCE: CRDV 02/22
PROJECT NAME: TRELAWNYD POND YEAR 2
APPLICANT: TRELAWNYD COMMUNITY ASSOCIATION

LOCATION:
TRELAWNYD

CONTRIBUTION:
£819

MANAGEMENT PLAN:
The Built Environment



The Trelawnyd Pond Project aim was to bring back to life a much neglected feature of the village which, previously, was a haven for wildlife such as toads, newts and frogs. In subsequent years, the pond has become choked with weeds and the surrounding area has become almost inaccessible.

The majority of the works were undertaken in year 1 (2021), where most of the pond renovation took place.

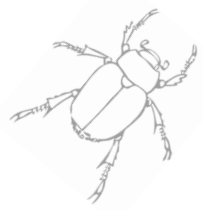
This year the project focused on pond and site planting and final aesthetic tidying around the site, observe and monitor wildlife and begin building a dry stone with volunteers.



OUTCOMES
An enhanced local landscape and asset for the community.
A restored pond with benefits to wildlife

MANAGEMENT PLAN

Pol-RHW6 – Improve access for local residents to green spaces from their door
RHWO6 – Continue to provide and promote volunteer opportunities for all across the AONB and support activity that engages communities in their local environment.



OUTPUTS

- Planting
- 243 volunteer hours
- Monitoring of wildlife
- Education session with school
- 2 x local contractors engaged

REFERENCE: CRDV 03/22
PROJECT NAME: PRESTATYN & CLWYDIAN RANGE
WALKING FESTIVAL 2022
APPLICANT: PRESTATYN WALKING FESTIVAL



LOCATION:
CLWYDIAN
RANGE



CONTRIBUTION:
£500



MANAGEMENT
PLAN:
People and
Communities

This year the Prestatyn and Clwydian Range Walking Festival offered 25 themed walks over 3 days on 20th to 22nd May 2022 featuring Offa's Dyke Path National Trail, Clwydian Range AONB, Wales Coast Path, Nature Reserves, Woodlands, historic sites etc.

The festival offers a varied walks programme

offering something for everyone whatever their age or abilities. Details of the walk included can be views at; www.prestatynwalkingfestival.co.uk



Funding provided went towards insurance and printing costs.

The festival is inclusive and free except for cost of coaches to start of some walks e.g. Moel Famau

OUTPUTS

- 700+ volunteer hours
- 48 volunteer opportunities
- 25 guided walks
- 500+ people engaged over 3 days
- 10 local contractors commissioned
- Promotional materials produced



MANAGEMENT PLAN

PoI-RHW1- To promote the sustainable use and enjoyment and understanding of the landscape in a way that contributes to local prosperity and social inclusion.

RHWO2 – Work with partners to encourage and promote responsible behaviour through education, campaigns and the promotion of activities that are linked to understanding and appreciation of the landscape.



The festival was an opportunity to promote the AONB as a place to benefit health, mindfulness and social wellbeing.

REFERENCE: CRDV 04/22
PROJECT NAME: GRUG A GOBAITH
APPLICANT: SEAN HARRIS, WILDBOARD PRESS



LOCATION:
CLWYDIAN
RANGE



CONTRIBUTION:
£4,910



MANAGEMENT
PLAN:
People and
Communities

Cri'r Gylfinir, funded through SDF and Arts Council Wales in 2021, culminated in a 2-week exhibition at Loggerheads incorporating 6 performances of the specially developed projection featured around John Blore's excavation of the Llanarmon yn Iâl Lynx cave.

A short film capturing the artwork is contained in the [here](#). Following the event, the project hosted a number of teacher training days to promote the project app and to plan and shape future engagement with schools in the AONB.

This year's project – *Grug a Gobaith – Heather and Hope* – was to develop these links further following up relationships with schools developed in the initial stage of the project, and involved: -



- 1) A formal research project, undertaken with Dr. Dylan Adams of Cardiff Metropolitan University School of Education and Social Policy, relating to the effectiveness of the Udfil interactive animation app in forging emotional connection between 80 KS2 pupils from Ysgol Bryn Coch, their families, and Loggerheads Country Park and the wider landscape. The research process will comprise.
- 2) A day in school for each of the three classes.
- 3) A 'pilgrimage' to Loggerheads Country Park where the pupils used a version of the app. They engaged in conversations relating to contemporary issues raised by cave

paleontological finds e.g. should we reintroduce the lynx and the elk – which raises questions surrounding our relationship with indigenous predators and large herbivores.



LOCATION:
CLWYDIAN
RANGE

CONTRIBUTION:
£4,910

MANAGEMENT PLAN:
People and
Communities

- 4) An inter-generational pilgrimage at Loggerheads culminating in a projection in the landscape.
- 5) Interviews conducted by Dr. Adams with participants as part of a data-gathering process so as to form a qualitative analysis.
- 6) Interviews conducted by Dr. Adams with participants as part of a data-gathering process so as to form a qualitative analysis.
- 7) A small range of AONB-based food and drink products which highlight sustainable practices on the part of producers and who’s branding creatively, engagingly and thought-provokingly expresses an ethos of respect for the land and reciprocity: in other words – a *sustainable* approach. This element explored links with Swan Farm and the AONB Food groups which have been supported by the SDF.
- 8) The creation of an archive of reminiscence relating to the curlew (and other upland species) in the landscape of the AONB. Representing testimony in its own right but will also be central to the sound world of a moving image artwork of the type presented at Loggerheads in November 2021 that will be presented both in the landscape and in the Senedd.

OUTCOMES

The project has established a strong emotional connection to the AONB landscape and with matters concerning extinction, the finite nature of ‘resources’ and environmental and climate change

OUTPUTS

- 9 x school workshops
- 4 x public events
- 16 x Volunteers hours
- Branded foodwork



MANAGEMENT PLAN
RHWO2 – Work with partners to encourage and promote responsible behaviour through education, campaigns and the promotion of activities that are linked to understanding and appreciation of the landscape.

REFERENCE: CRDV 05/22
PROJECT NAME: NATURE FOR HEALTH
APPLICANT: DENBIGHSHIRE COUNTY COUNCIL

 **LOCATION:**
CORWEN &
LLANGOLLEN

 **CONTRIBUTION:**
£10,000

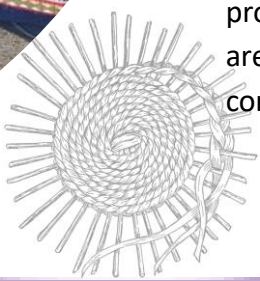
 **MANAGEMENT PLAN:**
People and
Communities

The aim of the Nature for Health project is to boost health and wellbeing within communities by providing access to and activities in nature in these areas, offering weekly activities such as walks, conservation tasks and arts and craft sessions.

Two areas in the Clwydian Range and Dee Valley AONB have been supported through Nature for Health and strong relationships between the Nature for Health team and communities in Llangollen and Corwen have been developed since the pilot project inception in the summer of 2018.

This project aimed to build these relationships further as we looked to how we worked post Covid-19 to support the needs of our communities as we navigate the effects the pandemic may have had on mental and physical health and wellbeing. Anecdotal evidence suggests there are some positive effects of the enforced lockdown situation, in terms of community cohesion and communities helping and supporting each other, along with increased access to the outdoors and local green spaces as people take their daily lockdown exercise.

Nature for Health looks to support those needing help with mental and physical wellbeing with a thoughtful timetable of activities. It also seeks to engage the people who may have rediscovered their local area or discovered what's on their doorstep for the first time during lockdown by encouraging people to keep up with their regular exercise outdoors and to engage with the activities the project can offer to learn more about their area and become involved in conservation and community projects.





LOCATION:
CORWEN &
LLANGOLLEN



CONTRIBUTION:
£10,000



MANAGEMENT
PLAN:
People and
Communities

MANAGEMENT PLAN

Pol-RHW1- To promote the sustainable use and enjoyment and understanding of the landscape in a way that contributes to local prosperity and social inclusion.

RHW02 – Work with partners to encourage and promote responsible behaviour through education, campaigns and the promotion of activities that are linked to understanding and appreciation of the landscape.

RHW05 – Strengthen relationships with local health and social organisations to raise awareness and increase opportunities for all to access the health and wellbeing benefits of connecting with the AONB's special qualities.

RHW07 – Develop opportunities to maximise the health benefits that access to the landscape can bring and target this to areas of most need within the communities within and around the AONB.



OUTPUTS

- 442 Participants engaged in events
- 5 Schools engaged in project
- 97 Public events
- 291 Volunteer Hours recorded
- 8 Rural Skills sessions delivered
- 450 trees planted
- 80 fruit bushes planted
- 1 Hedgerow created
- 4 Habitats improved
- 9 local contractors/suppliers engaged



REFERENCE: CRDV 06/22
PROJECT NAME: FRIENDS OFFICER
APPLICANT: FRIENDS OF THE CLWYDIAN
RANGE & DEE VALLEY

LOCATION:
PAN AONB

CONTRIBUTION:
£2,900

MANAGEMENT
PLAN:
People and
Communities

The Friends of the CRDV AONB has been a constituted group for 6 years now, and acknowledged as successful in terms of members circa 240; and financial security. Working closely with AONB, it helps promote their work and their projects, and is a conduit to public views of what the AONB is achieving.

Friends group offers its members bespoke events and a newsletter that gives news on information on a vast breadth of topics, culture, history and a glimpse behind the scenes of the work in AONB. Public reach is important, as the area is attracting a greater interest as a result of the focus of nature and wellbeing, outdoor activities and the potential change to National Park status.



An application to the Sustainable Development Fund was made for financial support towards an individual for up to 5 hours per week on a range of digital activities such as management of social media platforms and new engagement events and activities. Following some delays in recruitment Caroline Conway was appointed in February 2023 to work alongside the Executive team.

Since commencing the role Caroline has assisted the group to host events, write newsletters, update website and digital platforms, grow membership and prepare an events calendar. She will continue to assist the group in 2023 to meet the objectives set out in the application.

OUTPUTS

- Job creation
- Promotional activities
- Membership growth
- Events

MANAGEMENT PLAN

Pol-RHW1- To promote the sustainable use and enjoyment and understanding of the landscape in a way that contributes to local prosperity and social inclusion.

RHWO2 – Work with partners to encourage and promote responsible behaviour through education, campaigns and the promotion of activities that are linked to understanding and appreciation of the landscape.

REFERENCE: CRDV 07/22

PROJECT NAME: GREEN COMMUNITIES

APPLICANT: VARIOUS COMMUNITIES; Llandegla, Pentredŵr, Froncysyllte, Nannerch, Corwen, Llanbedr



LOCATION:

CORWEN &
LLANGOLLEN



CONTRIBUTION:

£23,866.27



MANAGEMENT
PLAN:

The Built Environment

The Green Communities project is supported by the Welsh Government's Enabling Natural Resources and Wellbeing Fund, which means that projects and initiatives are required to integrate the principles of Sustainable Management of Natural Resources (SMNR) into activities and community infrastructure.

The Green Communities project supports improvements to where people live, work and play. The project supported community-led initiatives within town and villages. Up to 30 communities were able to participate in the project in North East Wales, each community fulfilling their own needs. 7 of these communities were within the AONB, and the Sustainable Development Fund was sought to provide the match funding.

Examples of the types of activities supported include;

- Community Miles route creation and access improvements at Nannerch, Froncysyllte and Garth supported through the project encourage the use of the countryside for recreation and the improvement of health and wellbeing of the communities supported. Increasing our connection with nature has been shown to have positive effects on both health and wellbeing. All the projects supported have demonstrated one or more of the proven pathways towards nature connection, these being contact, beauty, meaning, emotion and compassion.
- 23.4 km of footpaths have been improved, 47 gates have been installed in these 3 communities improving accessibility for all together with a leaflet and information panel created for each route.
- Sustainability of community buildings through solar installation and associated battery storage in Llandegla and Llanbedr DC .
- Improved lighting in Llanbedr DC has also brought the benefit of education regarding energy conservation. By working with the AONB's Dark Skies project they were also able to ensure additional benefits to biodiversity through investing in the correct light fittings.
- Green Infrastructure improvements such as the installation of E-bike charging points at Llanbedr DC



REFERENCE: CRDV 07/22

PROJECT NAME: GREEN COMMUNITIES

APPLICANT: VARIOUS COMMUNITIES; Llandegla, Pentredŵr, Froncysyllte, Nannerch, Corwen, Llanbedr



LOCATION:
VARIOUS



CONTRIBUTION:
£23,866.27



MANAGEMENT
PLAN:
The Built Environment

- Increases in accessible food sources through the preferred planting of edible bushes and trees. Bryneglwys planted a mix of 10 apple and cherry trees, Corwen Community Garden created edible fruit tree hedges and fruit bushes hedges totalling approx. 70m.
- Increasing public greenspace biodiversity through hedge, tree and wildflower planting with native trees being planted at Nannerch and Hwb Pentredwr along with wildflowers being sown within Corwen Community Garden orchard area to enhance the biodiversity and visual aspect for visitors to the adjacent railway station.
- Rural skills have included fruit tree grafting at Corwen Community Garden, Hedgelaying at Bryneglwys Playing Field and Bird box making to the design of a local ornithologist at Hwb Pentredwr



The projects made use of local suppliers and materials wherever possible to carry out works and reduced the overall footprint and impact of the projects. In addition, projects arranged skills sessions to deliver some of the works simultaneously upskilling members of the community.

OUTPUTS

- 253 volunteer hours recorded
- 6 public events
- 11 local contractors commissioned
- 15 Trees planted
- 5 Habitats improved
- 23km footpaths improved
- 3 Hedgerows created
- 47 access improvements
- Interpretation and promotion

The projects also worked innovatively with other local external projects such as Gwllangollen to source local wool for weed suppression on hedgerow creation in a public space.

REFERENCE: CRDV 07/22
PROJECT NAME: GREEN COMMUNITIES
APPLICANT: VARIOUS COMMUNITIES; Llandegla,
Pentredŵr, Froncysyllte, Nannerch, Corwen, Llanbedr

LOCATION:
VARIOUS

£ CONTRIBUTION:
£23,866.27

MANAGEMENT
PLAN:
The Built Environment



OUTCOMES

The successful projects have contributed towards Improving and enhancing local environment quality, active sustainable management of natural resources, developing and improving access to sustainable green infrastructure and improving ecosystem resilience. The projects also aimed to tackle issues such as poverty, financial sustainability, climate change, environmental quality and social exclusion by providing opportunities for volunteering, green prescribing and nature based solutions.

MANAGEMENT PLAN

NLHO1 – Support and enable programme to conserve and enhance, the features that maintain the Special Qualities, landscape character and natural environment of the AONB.

NLHO8 – Encourage and enable effective broadleaf woodland, veteran trees and hedgerow management, including strategic planting, tree protection, thinning and natural regeneration.

ACCO2 – Help communities and land owners to recognise how land management practices will need to change to respond to future climate change.

ACCO5 – Encourage opportunities for eco innovation development and implementation to tackle climate change where this does not negatively impact on landscape quality.

RHWO3 – Work in partnership to continue providing high quality facilities and infrastructure to enable visitors and local communities to enjoy and protect the special qualities of the AONB.

RHWO6 – Continue to provide and promote volunteer opportunities for all across the AONB and support activity that engages communities in their local environment.

RHWO8 – Continue work with the NOS Dark Sky partnership to safe-guard and increase areas of protected dark skies across the AONB and raise awareness of the wellbeing benefits to local communities and visitors.



The Roman Bath House is situated near the Prestatyn town centre, at the end of a residential street. It is easily accessible, yet little known by local residents and visitors. This application for funding was to support four sections of works:

- 1) improvements to the archaeological remains,
- 2) community engagement
- 3) planting and
- 4) site interpretation

Activities included;

Renovations to stonework

Between 13th September and 21st October, Ben Davis carried out the renovations to the stonework. Ben carried out works to a significant section of the stonework, however he did not manage to complete the renovations in the timeframe available and budgeted for. Opportunities for a second year of funding to complete the project are currently being looked into.

Works to pathways

Ben Davis carried out work to fill in cracks in the pathway stones between the 24th of October and the 4th of November. Ben carried out works to a significant section of the paths, however he did not manage to complete the works in the timeframe available and budgeted for.

Opportunities for a second year of funding to complete the project are currently being looked into. The volunteers also helped with the pathway work for a day.

AONB History Group visit

On the 14th of September, the AONB History Group visited the site. Cadw representatives also attended to inspect the test patch.

Schools arts sessions

Six schools participated in an arts project where the children made their own Roman-inspired art, designing their own legionary tiles and pewter coins. Four of these sessions were funded through this grant. The schools involved were: Ysgol Y Llys, Ysgol Clawdd Offa, Ysgol Melyd, Ysgol Penmorfa, Ysgol Trelogan and Ysgol Gronant.



REFERENCE: CRDV 08/22
PROJECT NAME: ROMAN BATHS
APPLICANT: DENBIGHSHIRE COUNTY COUNCIL



LOCATION:
PRESTATYN



CONTRIBUTION:
£5,100



MANAGEMENT
PLAN:
Historic Settlement
and Archaeology

Schools site visits

On 24th and 25th of October, the schools visited the Roman Bath House to learn more about Roman history in the local area. They were joined by Ben Davis who led a session where children could get involved in the stonework renovations, Ashley Batten from Cadw who gave a talk on Roman History in the area, Roman Tours who provided re-enactment, and Fiona Grant who explained Roman artefacts provided by Denbighshire's Heritage team. We also provided Roman-inspired colouring-in sheets as an additional activity.

Volunteer event: helping with works to paths

On the 27th of October the volunteers helped with filling in gaps between paving slabs in the pathway.

Volunteer event: Roman-inspired art

An event was organised for the volunteers to create their own Roman-inspired art on the 8th of November. The volunteers designed and made their own legionary tiles and pewter coins.



Volunteer event: wildflower plug planting

An event was organised for volunteers to plant wildflower plugs in the wooded area of the site on the 15th of November. A people counter was also installed on this date.



Exhibition

An exhibition was set up in Prestatyn Library to display the school childrens' work, designed by Ben Davis, on the 6th of December.

The exhibition was available for the public to view, free of charge, during library opening hours until early March. We then displayed the artwork at the open day.

Volunteer event: site tidy-up

Volunteers attended a tidy-up session at the Roman Baths on the 7th of February. Attendees raked up leaves and weeded the site in preparation for the open day.

Information panels

Two information panels were designed to be installed at the site. One replaced the existing panel, and one is a map of North Wales, putting the Bath House into context with key historical sites. The panels were designed with input from Cadw and AONB colleagues. The panels were installed in early March.

REFERENCE: CRDV 08/22
PROJECT NAME: ROMAN BATHS
APPLICANT: DENBIGHSHIRE COUNTY COUNCIL

LOCATION:
PRESTATYN

CONTRIBUTION:
£5,100

MANAGEMENT
PLAN:
Historic Settlement
and Archaeology



Open day

We held an open day to raise awareness of the work completed on the site on the 18th of March. The open day was well attended and included a Roman-inspired art workshop, displays of artefacts and childrens’ artwork, and colouring in. We did hire Roman re-enactment for the event from Roman Tours, but he tested positive for Covid before the event so wasn’t able to attend. We are working with Roman Tours to arrange an alternative date for the re-enactment to be used.

MANAGEMENT PLAN

PoI-NLH4 – Conserve and enhance features and sites of archaeological, historic and cultural importance within the AONB, including the WHS, whilst recognising that the whole of the landscape has an historic dimension.

NLHO1 – Support and enable programmes to conserve and enhance, the features that maintain the Special Qualities, landscape character and natural environment of the AONB.

NLHO3 – Enable partnership working to conserve and enhance features and sites or archaeological, cultural and historic importance having key regards to cumulative impacts and pressures.

PoI-RHW1- To promote the sustainable use and enjoyment and understanding of the landscape in a way that contributes to local prosperity and social inclusion.

RHW06 – Continue to provide and promote volunteer opportunities for all across the AONB and support activity that engages communities in their local environment.



OUTPUTS

- 121 Volunteer Hours recorded
- 17 events
- 10 local contractors engaged
- 5 + promotional activities



In the summer of 2022 CRAG excavated a site in Bryneglwys which lies within the Clwydian Range and Dee Valley Area of Outstanding Natural Beauty (AONB) with the aims of;

- 1) To excavate a site at Bryneglwys where geophysical survey had confirmed features of archaeological interest, in particular a probable ring cairn and shooting butt.
- 2) To share the findings of the excavation with the local community and other interested individuals through a variety of channels, and, in due course, report to the lead bodies for promoting and recording archaeology in Wales, such as the Royal Commission for Ancient and Historic Monuments Wales (RCAHMW).

Dates of excavation: 28 May-3 June and 23 July-13 August 2022

The excavation

All excavation work was carried out under the guidance of Dr I Brooks of Engineering Archaeological Services Ltd and was led and organised by Karen Lowery, the Chair of CRAG. A cross section of the shooting butt was dug and recorded between 28 May and 3 June 2022.

Exploratory digging of the cairn in May-June confirmed the existence of large stones arranged in roughly concentric rings. On our return to the site in July, two opposing quadrants of the cairn were excavated. In a gap in the outer ring on the south side an area filled with charcoal and bone was found. In addition, within the inner ring there was a cremation burial containing a quartz crystal and a large flint arrowhead. Further concentrations of charcoal and cremated bone in other areas suggest other funerary deposits. Just beyond the outer ring was an almost intact pottery vessel, the lifting of which required the services of a conservation expert. Lithic finds included hammer stones and worked flint. Many pieces of quartz, a significant material in funerary contexts, were found.

The finds and features discovered were significant and the site received visits from several professional archaeologists, including Frances Lynch, who is a national expert in the excavation and interpretation of prehistoric sites.



REFERENCE: CRDV 09/22
PROJECT NAME: BRYNEGLWYS EXCAVATIONS
APPLICANT: CLWYDIAN RANGE
ARCHAEOLOGY GROUP



LOCATION:
BRYNEGLWYS



CONTRIBUTION:
£2,000



MANAGEMENT
PLAN:
Historic Settlement
and Archaeology

The excavation team included members of CRAG, two students from Chester University (one of whom came from Taiwan and had never seen a sheep before), two from Oxford and one student from a local Vith form who is considering a career in archaeology.

In addition, a AONB Young Ranger spent a day with us, accompanied by one of the Rangers who found a piece of worked flint.



Through local IT channels, the Bryneglwys community was kept informed of progress and residents visited the site, both on the Open Day and at other times. In addition to the information circulated within the local community at Bryneglwys, the CRAG website and Facebook pages covered the progress of the excavation. Karen Lowery, our Chair, gave a talk to Caerwys Historical Society in June 2022 and February 2023 at Eryrys. Photographs and lithic finds from the excavation will feature at a CRAG exhibition to be held shortly at Loggerheads. Other venues for the display have been offered in and around the AONB in the spring and summer. A Finds Day

was held on 24 September 2022 and similar days will follow in view of the quantity of material to be processed and recorded.

MANAGEMENT PLAN

PoI-NLH4 – Conserve and enhance features and sites of archaeological, historic and cultural importance within the AONB, including the WHS, whilst recognising that the whole of the landscape has an historic dimension.

RHWO2 – Work with partners to encourage and promote responsible behaviour through education, campaigns and the promotion of activities that are linked to understanding and appreciation of the landscape.

RHWO6 – Continue to provide and promote volunteer opportunities for all across the AONB and support activity that engages communities in their local environment.

OUTPUTS

- Excavations of ring cairn / shooting butt
- 1140 Volunteer Hours recorded
- 30 people engaged in the project
- 5 public events
- 1 local contractor supported
- 2 reports written
- Numerous promotional items

OUTCOMES

The project has resulted in increased knowledge about the prehistory of the Clwydian Range and that sharing such knowledge fosters a unique sense of connection to humanity, past and present, and the landscape.

REFERENCE: CRDV 11/22
PROJECT NAME: LOST LANDSCAPES CONTINUED – AN
LANDSCAPE ENHANCEMENT INITIATIVE PROJECT
APPLICANT: AONB



LOCATION:
DYFFRYN
MORWYNION



CONTRIBUTION:
£10,000



MANAGEMENT
PLAN:
Traditional Boundaries

This has been the third year of the project that has been predominantly funded (75%) by National Grid, through the Landscape Enhancement Initiative grant scheme, to reduce and compensate for the visual impact of their infrastructure in protected landscapes. The AONB successfully applied for nearly £250K from the scheme in 2018 in order to provide grants to 19 landowners in the Brynegwlys area of the AONB to carry out landscape improvements to help mitigate for the impact of the infrastructure. On completion (winter 2022/23), these improvements will include over 8km of hedge restoration, 60m drystone walling, wildflower meadow creation and pond work. The project is also working with Llandegla Community Council to carry out a number of works within the village area, such as community wildflower meadow events, hedge laying in the main recreational field, public right of way improvements and providing informal seating.



OUTPUTS

- Hedgerow Restoration – 8.1km
- Wildflower meadow creation – 5.9 ha
- Access improvement works – 0.5km
- Ponds creation/restoration – 4
- Woodland planting – 0.49ha
- Wetland enhancement – 0.5ha
- Drystone walling – 60m

REFERENCE: CRDV 11/22

PROJECT NAME: LOST LANDSCAPES CONTINUED – AN
LANDSCAPE ENHANCEMENT INITIATIVE PROJECT

APPLICANT: AONB



LOCATION:
DYFFRYN
MROWYNION



CONTRIBUTION:
£10,000



MANAGEMENT
PLAN:
Traditional Boundaries

OUTCOMES

- Improved landscape character of the Morwynion valley due to over 8km of hedge restoration work, 6ha of wildflower meadow creation and 60m of drystone wall completed so far.
- Better access for the community to the surrounding landscape, including a community nature area, through the Llandegla access improvements. Local people have commented how they are using the path more now and enjoying the route.
- Improved communication with the local community. Volunteers from Llandegla have helped sow the wildflower meadow and we plan to run a drystone wall volunteer event soon at Caer Drewyn.
- Improved field boundaries for landowners
- Landowners have increased in pride in their landscape and a keenness to develop their own rural skills and we were able to offer a landowner hedge laying training day to further this. This was well received and we plan to do more next season.
- Improved integrity of the landscape due to the long term enhancements that will develop over decades from improved hedging and wildflower meadows.
- Enhanced biodiversity and wildlife connectivity within the local areas of the Morwynion Valley through the large amounts hedgerow restoration.

MANAGEMENT PLAN

Pol-NLH1 – Restore protect and expand key habitats and species at a landscape scale in order to increase resilience to environmental change.

Pol-NLH5 – Safeguard the AONB’s panoramic views, tranquillity, dark skies and environmental quality for future generations.

NLH02 – Support and enable land management practices, individually and collectively that contributes to natural beauty and environmental resilience.

NLH08 – Enable and encourage effective broadleaf woodland, veteran tree and hedgerow management, including strategic planting, tree protection, thinning and natural regeneration.



REFERENCE: CRDV 12/22
PROJECT NAME: SUSTAINABLE APIARY
APPLICANT: FLINTSHARE CSA Ltd.

LOCATION:
CILCAIN

CONTRIBUTION:
£950

MANAGEMENT
PLAN:
People and
Communities

In 2022 Flintshare Community Supported Agriculture Ltd developed a sustainable apiary in the Community Garden at Cilcain, which currently has five active hives and produced 250 jars of honey. During the project they built a solid base, purchased and erected a shed to store the growing amount of bee keeping equipment on site.



Two of the members have received training and mentoring from a master beekeeper and the project has raised awareness about the fascinating biology of honeybees and their importance and by running a number of outreach activities both for members and local residents



OUTCOMES

- Increased knowledge of the social biology of bees and beekeeping
- Raised awareness that FlintShare manage an apiary and about the importance of pollinators
- Our members and families are enjoying locally produced honey



OUTPUTS

- Base for shed constructed by volunteers, shed purchased and erected
- a pollinator display was put up at our community café on 8th October which was attended by 60+ people during the afternoon
- an evening talk by master bee-keeper Geoff Critchley in Cilcain Village Hall on Wednesday 29th March which was attended by 28 people, at least 50% of which were non-members. features on pollinators were posted on our Facebook page and in our members newsletter



MANAGEMENT PLAN

PoI-NLH3 – Support and enable progressive land management change to enable wildlife to thrive within the AONB and its dependent landscapes, adapting to a changing climate whilst supporting climate mitigation measures.

REFERENCE: CRDV 12/22
PROJECT NAME: NATUR A NI
APPLICANT: NEW SINFONIA

LOCATION:
PAN AONB

CONTRIBUTION:
£3,000

MANAGEMENT
PLAN:
People and
Communities

Natur a Ni uses music as a catalyst to enable people, no matter their age, interest or background, to connect with nature and each other. The project takes a holistic approach to engage with new audiences, immersing them in new musical experiences in spectacular locations whilst promoting environmental sustainability.

The Sustainable Development Fund contributed towards the creation and presentation of a new chapter of Slumbersaurus that focuses on the theme of environmental sustainability. Slumbersaurus is a musical story about a restless baby dinosaur with an appetite for adventure and music, specifically designed to engage with young children and families



In stage 1, alongside Mudiad Meithrin the project engaged with young children under the age 5 and encouraged them to create the new narrative for the next instalment of a music and drama production. The theme of environmental sustainability was the catalyst for creating this new narrative, promoting reduce, reuse, recycle and inspire the youngsters to get out and explore.

The outdoor performances in Stage 2 took place at Loggerheads Country Park and Plas Newydd, Llangollen. This activity was the initial presentation of the new musical story authored by the children that promotes environmental engagement and sustainability in a unique musical experience.



REFERENCE: CRDV 12/22
PROJECT NAME: NATUR A NI
APPLICANT: NEW SINFONIA

LOCATION:
PAN AONB

CONTRIBUTION:
£3,000

MANAGEMENT
PLAN:
People and
Communities

During stage 4 the music and narrative for our environmentally themed Slumbersaurus story was recorded and then brought to life in a unique musical visual experience. The product will be used at subsequent events and performances, and be available online as a resource for educating

MANAGEMENT PLAN

Pol-RHW1 – To promote the sustainable use and enjoyment and understanding of the landscape in a way that contributes to local prosperity and social inclusion.
Pol-RE2 – Support rural businesses of all kinds to encourage the sustainable use of the AONB and its natural resources for the benefit of the local people, communities, and economy.



OUTPUTS

- Public engagement events
- 3 x performances
- Promotional activities
- Educational resources

OUTCOMES

Local community interaction whilst learning about sustainability through a fun interactive performance. Removes financial and social barriers to participation. Local young children are more empowered and educated on environmental sustainability.





In 2022 Thomas Crane Associates, with assistance from volunteers from Llangollen museum (65 Volunteer hours), has undertaken a complete mapping exercise of the graveyard at Llantysilio. The information gathered has been used to create an interactive [map](#), freely available on the Llangollen Museum website. A link to this has been created from the Llantysilio Church website. The map has also been printed at A1 size and installed in the porch of the church, alongside printed copies of the information on each of the graves. New lighting sensors have been fitted to assist people in reading this information.

The Museum has worked with the church wardens and AONB officers to identify notable or interesting graves and has provided the information for a trail leaflet to encourage people to explore the graveyard. A path has been cut to pass each of the points on the trail, and this is already being well used by visitors.

The leaflet has been designed and is expected to be in use in September 2023.

The map and leaflet will be launched at a community event in October, which will also be a chance to promote the Church Memories project which is the focus of the SDF grant for 2023 – 24.

MANAGEMENT PLAN

Pol-NLH4 – Conserve and enhance features and sites of archaeological, historic and cultural importance within the AONB, including the WHS, whilst recognising that the whole of the landscape has an historic dimension.

Pol-RHW1 – To promote the sustainable use and enjoyment and understanding of the landscape in a way that contributes to local prosperity and social inclusion.

Pol-RWH6 – Improve access for local residents to green spaces from their front door.

RHWO2 – Work with partners to encourage and promote responsible behaviour through education, campaigns and the promotion of activities that are linked to understanding and appreciation of the landscape.

RHWO6 – Continue to provide and promote volunteer opportunities for all across the AONB and support activity that encourages communities in their local environment

OUTPUTS

- All graves recorded and mapped
- Interactive map
- Map and Records booklet produced
- Trail cut around graveyard.
- Leaflets designed in English and Welsh.

OUTCOMES

- Historical information preserved and shared
- Visitor experiences improved
- Visitor learning enhanced
- Foundations laid for reinforcing links to the community.

REFERENCE: CRDV 15/22
PROJECT NAME: THE OLD RAILWAY TRAIL
PARK RUN
APPLICANT: LLANGOLLEN PARK RUN



LOCATION:
LLANGOLLEN



CONTRIBUTION:
£1,000



MANAGEMENT
PLAN:
People and
Communities

The aim of the project was to set up a Park Run for Llangollen. The course would utilise the paths at Wenffrwd Pocket Park and start and finish at the Health Centre in Llangollen.



The free weekly 5k run or walk operates every Saturday morning at 9am. Over 1600

participants have taken part in the 11 events to date with over 100 volunteers also engaged. The influx of people has also seen enhanced trade in the local town of Llangollen.

OUTPUTS

- 1000+ volunteer hours recorded from 100+ volunteers
- New recreational opportunities



MANAGEMENT PLAN

Pol-RHW1 – To promote the sustainable use and understanding of the landscape in a way that contributes to local prosperity and social inclusion.

Pol-RHW4 – Ensure that the health benefits of access to the landscape can provide are promoted and opportunities to realise these benefits are developed.

RHW05 – Strengthen relationships with local health and social organisations to raise awareness and increase opportunities for all to access the health and wellbeing benefits of connecting with the AONB's special qualities.

RHW07 – Develop opportunities to maximise the health benefits that access to the landscape can bring and target this to areas of most need within the communities within and around the AONB.

OUTCOMES

Improvements in physical and mental health and wellbeing. Increased use of Wenffrwd Pocket Park within the AONB.



In 2023 the Clwydian Range and Dee Valley AONB were proud to be working together with the whole protected landscape family in Wales to bring another week of events around the country. Welsh Dark Skies Week, February 17th-26th, 2023.



Together, the National Parks and Area's of Outstanding Natural Beauty are all working hard to raise awareness of light pollution and how this impacts not just our view to the stars, but also our wildlife and health.

The Clwydian Range and Dee Valley hosted the following events;

- Stargazing guide to the Dee Valley at the Horseshoe Falls with the Our Picturesque Landscape project team
- 2 x Night time stand up paddleboarding experiences with local business SUPLass
- Young Rangers stargazing and toasted marshmallows
- Storytelling with Fiona Collins at Pen y Pigyn
- Soup and Stars at Moel Famau working with members of the Clwydian Range Food and Drink Group

Funding contributed to hosting the events and some promotional materials including film and photography.

OUTPUTS

- 6 x public events (for CRDV more pan Wales)
- 100+ people engaged
- Photo library content
- Promotional materials produced





LOCATION:
PAN AONB



CONTRIBUTION:
£3,407.37



MANAGEMENT
PLAN:
People and
Communities

MANAGEMENT PLAN

Pol-NLH2 – Ensure that the natural benefits and Services of the landscape are properly understood and valued

Pol-NHL5 – Safeguard the AONB’s panoramic views, tranquillity, dark skies and environmental quality for future generations

Pol-RHW1 – To promote the sustainable use and enjoyment and understanding of the landscape in a way that contributes to local prosperity and social inclusion

Pol-RHW2 – Ensure that all visitors and residents are able to experience the benefits of the special quality of the landscape of the AONB within environmental limits

RHWO2 – Work with partners to continue to promote responsible behaviour through education, campaigns and the promotion of activities that are linked to understanding and appreciation of the landscape.

RHWO8 – Continue to work with the NOS Dark Sky Partnership to safe guard and increase areas of protected dark skies across the AONB and raise awareness of the wellbeing benefits to local communities.

Pol-RE2 – Support rural businesses of all kinds to encourage the sustainable use of the AONB and its natural resources for the benefit of the local people, communities and economy.

REO4 – Support local businesses in and around the AONB to recognise and promote the unique and distinctive local produce they offer to residents and visitors to the AONB.

REO5 – Work to promote a deeper understanding of the Welsh culture and language of the AONB and its contributions towards the Areas special qualities.



OUTCOMES

Raised awareness of the importance of Dark Skies amongst local residents, businesses and visitors to the Clwydian Range and Dee Valley.

REFERENCE: CRDV 17/22

PROJECT NAME: FOOD AND DRINK NETWORK
DEVELOPMENT PROJECT

APPLICANT: LLANGOLLEN AND DEE VALLEY FOOD
AND DRINK GROUP



LOCATION:
AONB



CONTRIBUTION:
£3,500



MANAGEMENT
PLAN:
People and
Communities

This project has enabled the Llangollen and Dee Valley Food and Drink Group and the Clwydian Range Food and Drink Group to further develop the established network of independent food and drink farmers, growers, producers, retailers, catering and hospitality within the Clwydian Range and Dee Valley AONB.

It has also enable the group to increase the number of members; increase the diversity of membership across different types of independent food and drink businesses, and; increase the geographical spread of members across the entire Clwydian Range and Dee Valley AONB geographical area.

In particular the funding enabled the groups to curate several Networking Events to attract more member businesses and to forge greater links between the food and drink and tourism sectors, and the landscape of the AONB.

MANAGEMENT PLAN

REO4 – Support local businesses in and around the AONB to recognise and promote the unique and distinctive local produce they offer to residents and visitors to the AONB.

REO6 – Promote the Special Qualities of the AONB with local tourism businesses as a vehicle for enhancing marketing of the Clwydian Range and Dee Valley AONB brand.

REO7 – Develop and support thriving rural economies, local produce markets and year-round tourism which supports communities.

OUTPUTS

- Membership increase
- Increase in the diversity of types of food and drink business becoming members of LDVFD
- Increase in the geographical spread of LDVFD members across the AONB
- One Networking Event in Financial Year 2022/23

OUTCOMES

The events focused on developing the link between food and drink, tourism and the AONB, gaining a cohesive identity, offer and profile for the region's independent food and drink sector to increase reach of messaging and awareness of what's on offer in the AONB.

REFERENCE: CRDV 18/22
PROJECT NAME: GROW LLANGOLLEN
APPLICANT: GROW LLANGOLLEN



LOCATION:
LLANGOLLEN



CONTRIBUTION:
£1,200

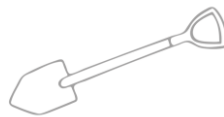


MANAGEMENT
PLAN:
People and
Communities

Funding has enabled the group to establish a training garden at Bryntysilio Outdoor Education Centre, purchasing insurance, compost, tools and equipment. They have run monthly volunteer sessions there from Feb 2023, transforming the site from bramble and pasture to no-dig beds and a mulched area in preparation for the 2024 season.



We have constructed pallet wood compost bays and set up an irrigation system. Seedlings have been donated by volunteers and we have started to learn what grows well on site and what requires more protection from pests. There are generally around 6 – 8 volunteers helping, with over 20 turning out in February to help tackle the undergrowth and start setting up the beds.



We have started a programme of monthly talks on growing food, with our first event being held in July in Welfare House in Llangollen. This attracted 14 people and was an informative and enjoyable evening. There was a lot of enthusiasm for more talks, and we are currently organising speakers on composting, no-dig gardening and herbal remedies. There was also a desire for sharing resources and bulk-buying of seeds and materials.



OUTCOMES

- Steering group cohesion and effectiveness has improved through practical work.
- Garden ready for future training activities
- 14 people engaged through talks
- 380 followers on Facebook



REFERENCE: CRDV 18/22
PROJECT NAME: GROW LLANGOLLEN
APPLICANT: GROW LLANGOLLEN

 LOCATION:
LLANGOLLEN

 CONTRIBUTION:
£1,200

 MANAGEMENT
PLAN:
People and
Communities



Volunteers grew vegetable seedlings which were shared at the Plas Newydd Plant Share in August.

They have also set up an excess produce stall at Drosi Bikes a few weeks earlier this year, and are receiving contributions of plums, runner beans, marrows etc.



MANAGEMENT PLAN

Pol-NLH2 –Ensure that the natural benefits and Services of the landscape are properly understood and valued.

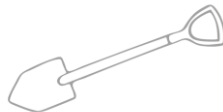
Pol-RE2 – Support rural businesses of all kinds to encourage the sustainable use of the AONB and its natural resources for the benefit of the local people, communities and economy.

REO1 – Engage constructively with landowners and farmers to ensure a collaborative sustainable future for land management in the AONB.

REO7 – Develop and support thriving rural economies, local produce markets and year-round tourism which supports communities.

OUTPUTS

- Garden Established at Bryntysilio
- Monthly talks started
- Plant share attended
- Nearby events promoted
- 24 Volunteers
- 250 Volunteer hours
- Excess produce share set up at Drosi bikes.

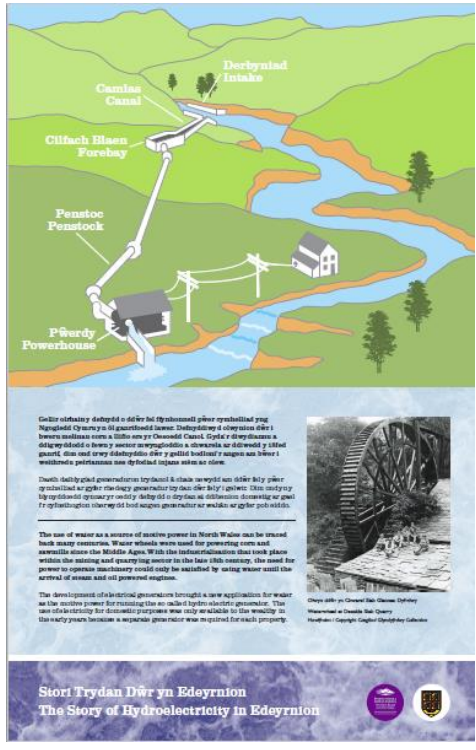


Over winter, Grow Llangollen are planning to apply for funding to contract a paid worker to take the broader visions forward and encourage wider engagement in the project. They also plan, in light of the Llangollen Gardening Club folding this year, to run the Gardening Show next year, with a focus on encouraging people to grow food and to learn more about the nutritional values of different growing and storage techniques.



The power of water has been harnessed to generate electricity in the area around Corwen for over one hundred years.

Stori Hydro tells the story hydroelectricity in the Dee Valley – how it was used in the past and how it is being used now to bring cheap renewable energy to local homes. It is a story that combines great technical skills with cooperation between local committed people, who have been prepared to put time and money into a scheme that helps to reduce the use of fossil fuels whilst giving cheaper energy to local people in fuel poverty. The scheme has been so successful that it is being replicated down the A5 at Bonwm and possibly at Glyndyfrdwy and it is a story that needs to be told.



Utilising the Sustainable Development Fund, the project extended the exhibition space in Corwen Museum to put on an exhibition comprising of interpretation boards, photographs and artefacts to tell this story to our visitors.

The turbine house for the Corwen project is only a couple of hundred yards from the Museum and the museum have arranged for its regular opening so that visitors can see for themselves how the electricity is produced.

MANAGEMENT PLAN

- Pol-NLH2** – Ensure that the natural benefits and Services of the landscape are properly understood and valued.
- Pol-ACC2** – Establish local ways to ameliorate the adverse effects of climate change, without causing detriment to our landscape & nature.
- Pol-RE2** – Support rural businesses of all kinds to encourage the sustainable use of the AONB and its natural resources for the benefit of the local people, communities and economy.

OUTPUTS

- Interpretation materials
- Exhibition to engage with 5,000+ people

OUTCOMES

Individual are more aware of where their electricity comes from and how they can reduce their usage, helping them financially and helping the environment.